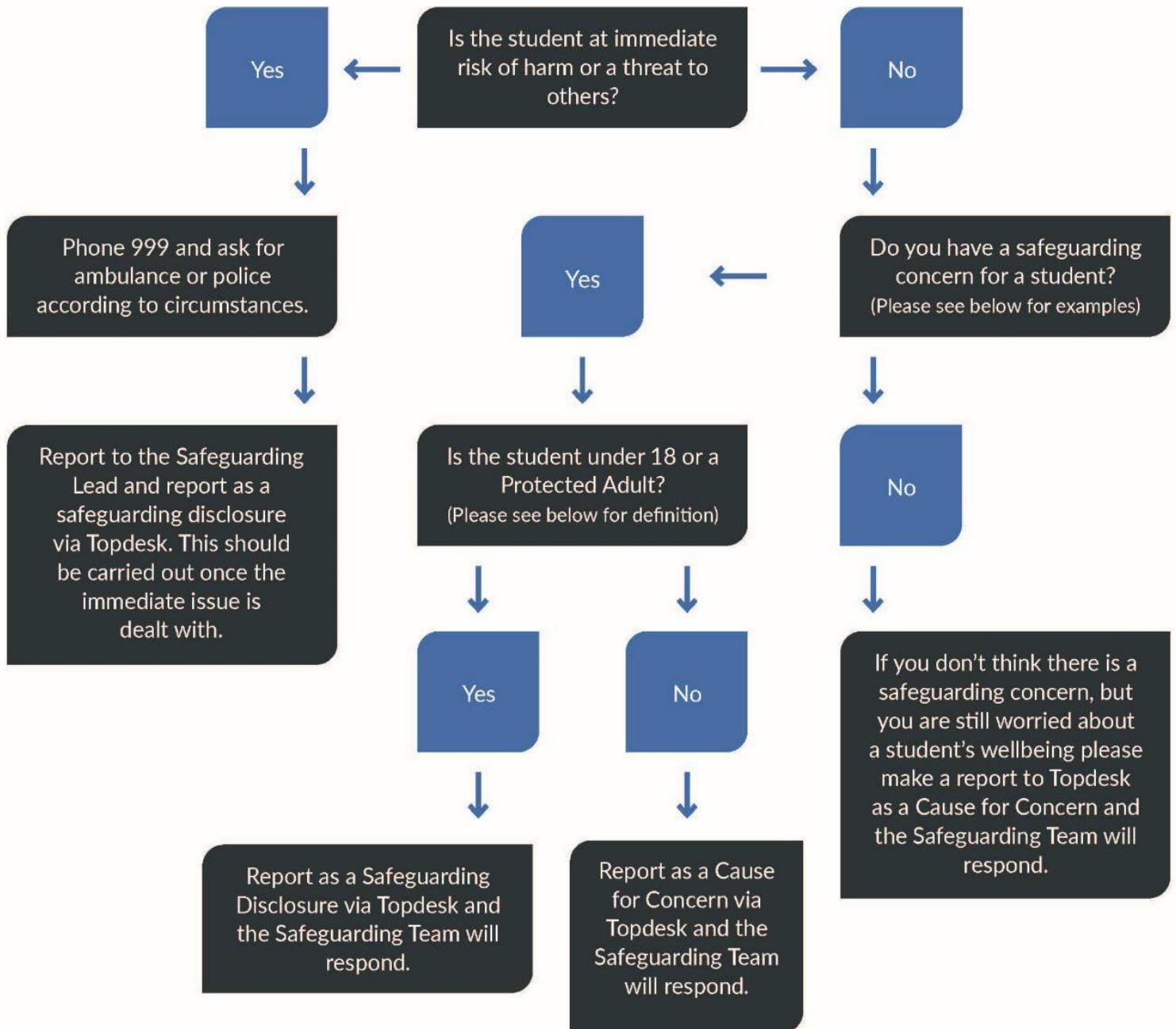


Safeguarding Flowchart



Immediate risk of harm examples - actively suicidal or behaving in a violent manner.

Safeguarding concern examples - any reports of abuse (physical, emotional, financial, sexual and neglect).

Cause for Concern examples - student is at risk of homelessness or is presenting with low mood.

Protected Adult - a person who is over 16 and is unable to safeguard themselves and is at risk of harm and because they are affected by disability, mental disorder, illness or physical or mental infirmity, are more vulnerable to being harmed by others who are not so affected.

This flowchart is an appendix in the safeguarding policy. This should be in all staff areas and offices. Please email wellbeing@edinburghcollege.ac.uk for a copy.

OUT OF HOURS

Please note that anything reported after 4.30pm will be picked up the following working day by the Safeguarding Team. If you are reporting out of hours (working hours are Mon-Fri, 8.30am - 4.30pm) and you require emergency assistance or are reporting someone at immediate risk, please contact the emergency services.