

| | |
|----------------------------|--------------------------------------|
| Corporate Ref. | EST001 |
| Level | Two |
| Senior Responsible Officer | Director of Estates & Infrastructure |
| Version | 1 |
| EIA | |
| Approved by | SMT |
| Approved date | 30/01/25 |
| Superseded version | N/A |
| Review date | January 2028 |

Sustainable Travel Plan 2025

- 1. Travel Planning2
- 2. Overview of College and Operations.....3
- 3. Edinburgh College Travel Survey – January 2024.....7
- 4. Objectives and Monitoring 11
- 5. Site plan..... 13

Version Control

| Version | Author | Date | Changes |
|---------|--------|------|---------|
| | | | |
| | | | |
| | | | |
| | | | |

1. Travel Planning

Sustainable travel planning is important in order to support both students and staff in making the most appropriate choices when travelling to campus, whether through signposting of travel options and highlighting campus accessibility or through the use of travel apps to make the journey to campus easy and stress free.

At Edinburgh College it is our duty during a climate emergency to support low carbon and sustainable travel and ensure that travel is not a barrier to studying or working. Any journey can incorporate health and wellbeing when it involves active travel.

Due to its wide geographical reach, in most cases the College timetabled courses should take place on a single campus to minimise the requirement for intercampus travel. Staff also tend to be based on one campus but do attend work at other campuses where required (with a specific policy in place to manage this for lecturing staff). For intercampus travel the college encourages the use of its electric car fleet.

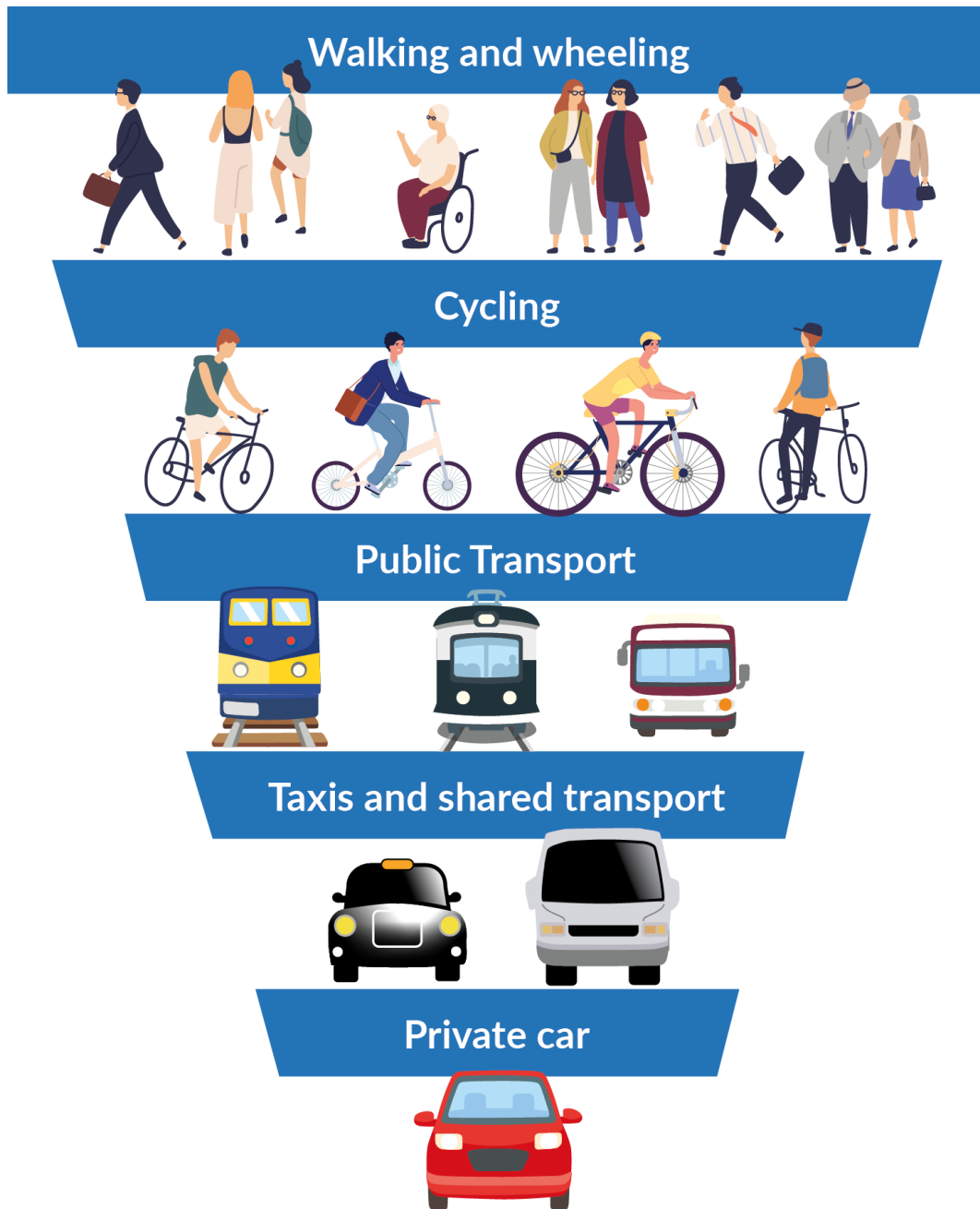
The use of the sustainable hierarchy, published below, is useful for all communications with students and staff. It gives the visual representation of the meaning of sustainable travel which can easily be tailored for messages to encourage the best travel option messaging such as:

Consider walking 20 mins each day (if you are able) to use public transport and feel healthier

Air travel is not referenced below as would only be used for students or staff attending campus in exceptional circumstances which would need to be agreed by the Chief Operating Officer.

2. Overview of College and Operations

Prioritising Sustainable Transport



Summary of College operations and purpose

We are Scotland's Capital College and we provide high-quality education and training to people and businesses across the region and beyond. We welcome students from over 139 countries worldwide, who choose from over 700 courses across 17 different subject areas with full-time, part-time, evening and distance-learning options available from access to degree level.

Number of students

In total the college has approximately 27,000 students across our campuses and outreach centre. Those attending on campus in 2023/24 were as follows:

Sighthill – 10,608

Granton – 6,023

Milton Road – 2,500

Midlothian 3,140

Number of campuses

Edinburgh College has four campuses spread across the city which are well served by public transport (see 5. Site Plan).

Operating hours

Monday

Friday 8am – 6pm**

Saturday and Sunday

9am – 6pm (on request for special events)

**Campuses open from 6 pm - 9 pm when showing a student ID

Holiday operating hours (closed during Christmas holidays)

Monday

Friday 8am – 6pm

Saturday and Sunday

Closed

Plan your journey

There are various ways to plan your journey and the College provides links to travel options on our website:



Site facilities

By bike

Cycling is a great way to get to our campuses and it's great for a person's health and the environment too. All of our campuses have secure cycle parking, changing and shower facilities, as well as puncture repair kits and tools for minor repairs.

Cycling journeys can be planned with Komoot or Cycle Streets.

Campus parking

Limited parking is available at each campus. Parking permits are required to park in campus car parks and must be displayed on vehicles at all times. These can be requested by collecting a form from campus receptions during induction or when people start a course.

Permits need to be displayed at all times and tickets are issued to anyone not displaying a valid permit or parked in prohibited areas outside of parking bays.

All returning students should apply for a new car parking permit every year. Previous permits will no longer be valid.

Electric Vehicle Charging

Since 2023, students and staff who use electric and hybrid vehicle charging posts at Edinburgh College have been required to pay to charge their vehicles.

Tariffs were introduced in line with pricing for electric vehicle (EV) charging across Edinburgh and the country as a whole, but are subject to review.

The current costs of charging your vehicles at our campuses:

AC Chargers

- £0.25 per kWh on AC Chargers
- Overstay fee of £30 if over 4 hours stay (30 minutes grace)
- DC Chargers
- £0.35 per kWh on DC Chargers
- Overstay fee of £30 if over 45 minutes stay (30 minutes grace)

Anyone wishing to use the charge posts requires a ChargePlace Scotland account card which can be purchased for £10 by registering with [ChargePlace Scotland | Scotland's Public EV Charging Network](#). Tariff payments will be taken from ChargePlace Scotland account.

Liftshare

The College is a member of Liftshare, meaning staff and students can join the online Liftshare community to find people to share a car with to get to campus.

Staff and students can visit [Liftshare](#), where they can register for free as a student or staff member. Once registered, they can search for other members who are travelling in the same direction and contact them to arrange a lift-share.

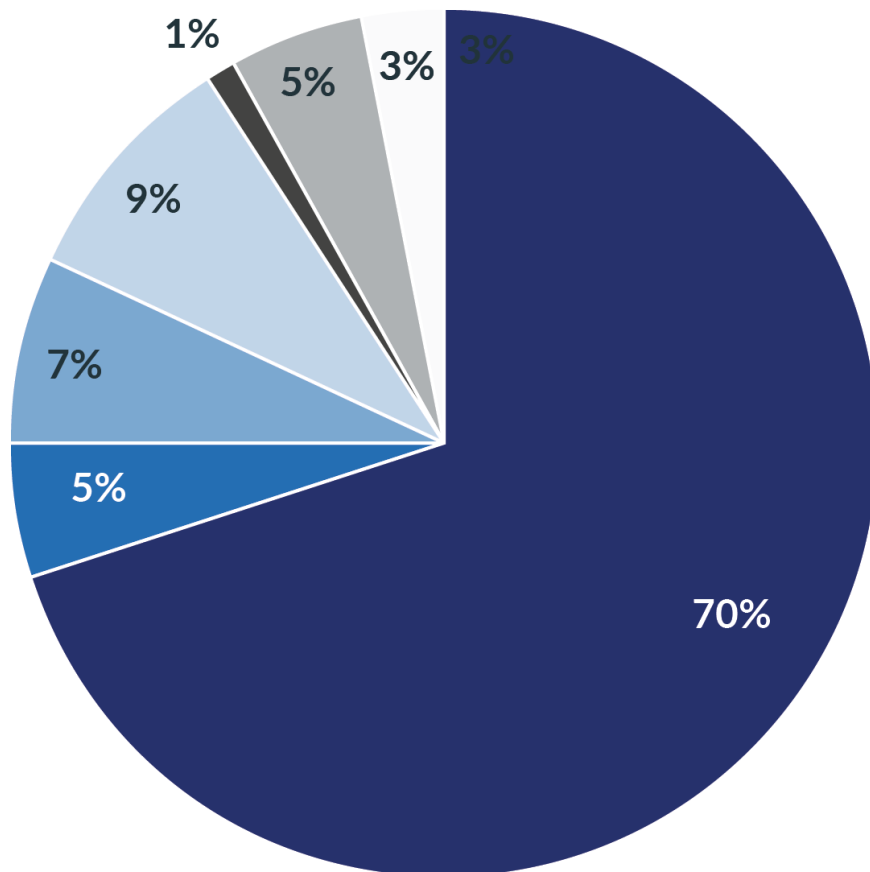
Liftshare is a cost-effective way for people to travel to campus, particularly while we face high fuel costs.

What's more, lift sharing helps the environment by reducing the number of cars on the road, and there will be less competition for parking spaces on campus.

3. Edinburgh College Travel Survey – January 2024

About journey to work

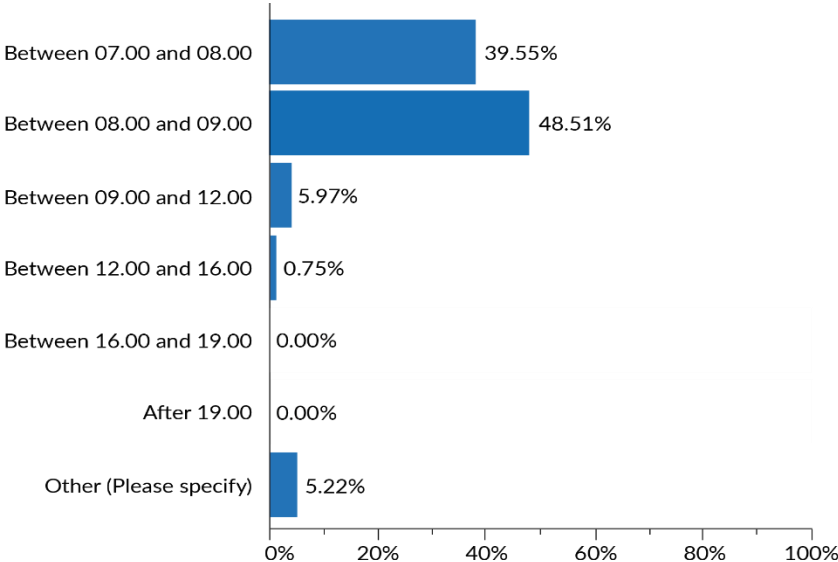
- 70% single occupancy car use.
- 36% of car users are travelling over 100 miles per week.
- 19% of car users are traveling less than 10 miles per week, with 2/3 of those drivers also stating that they are interested cyclists.
- Of the car users, only 4 are using EV/hybrid vehicles, with the rest being petrol/diesel cars.
- 5% car sharing – postcodes EH4, EH1, EH9, EH32 and EH21.



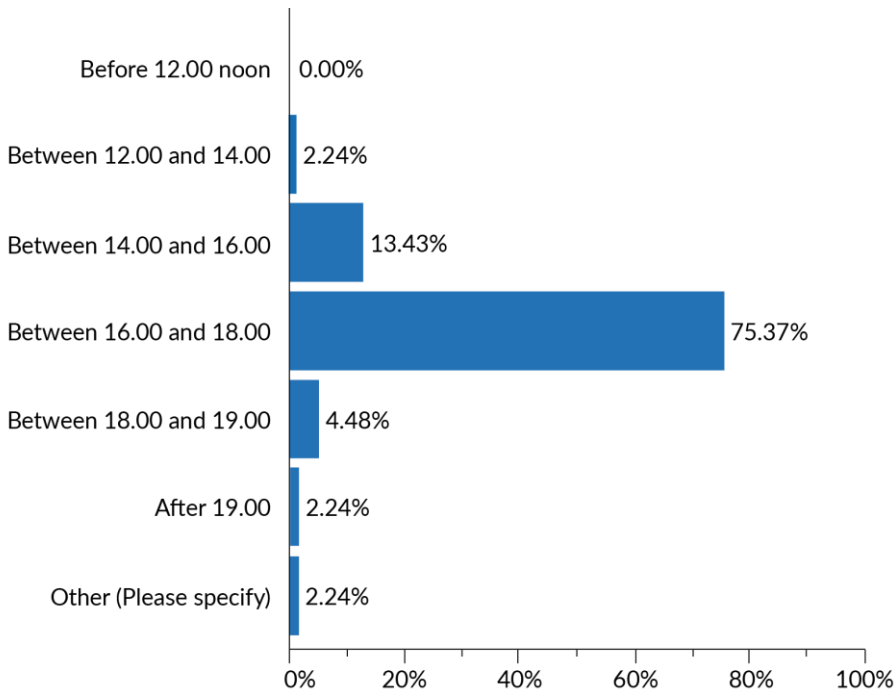
Start and end times

Peak arrival and departure times – 88% of staff arrive between 7–9 and 75% stated that they depart campus between 4-6pm usually.

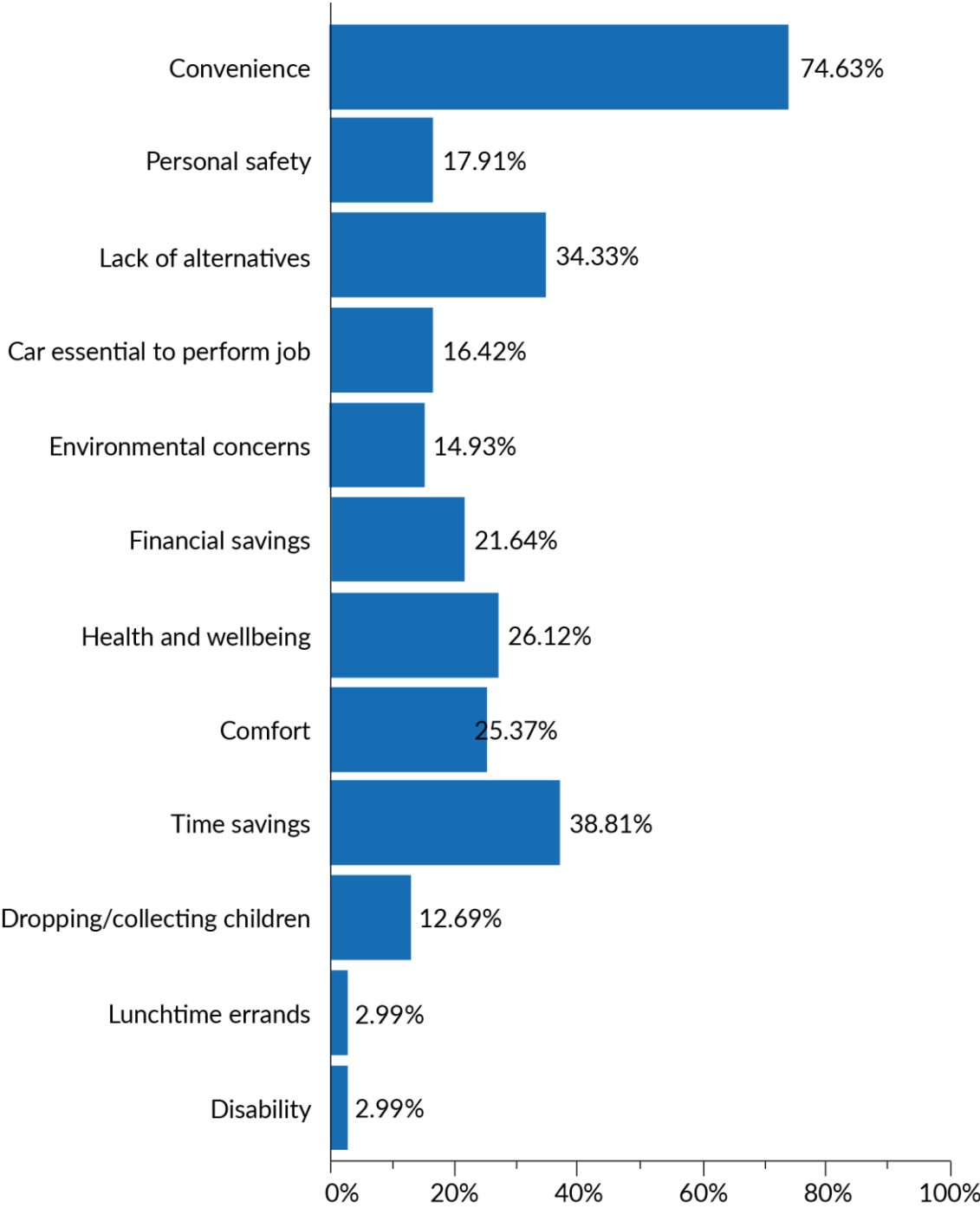
What time do you normally arrive at campus?



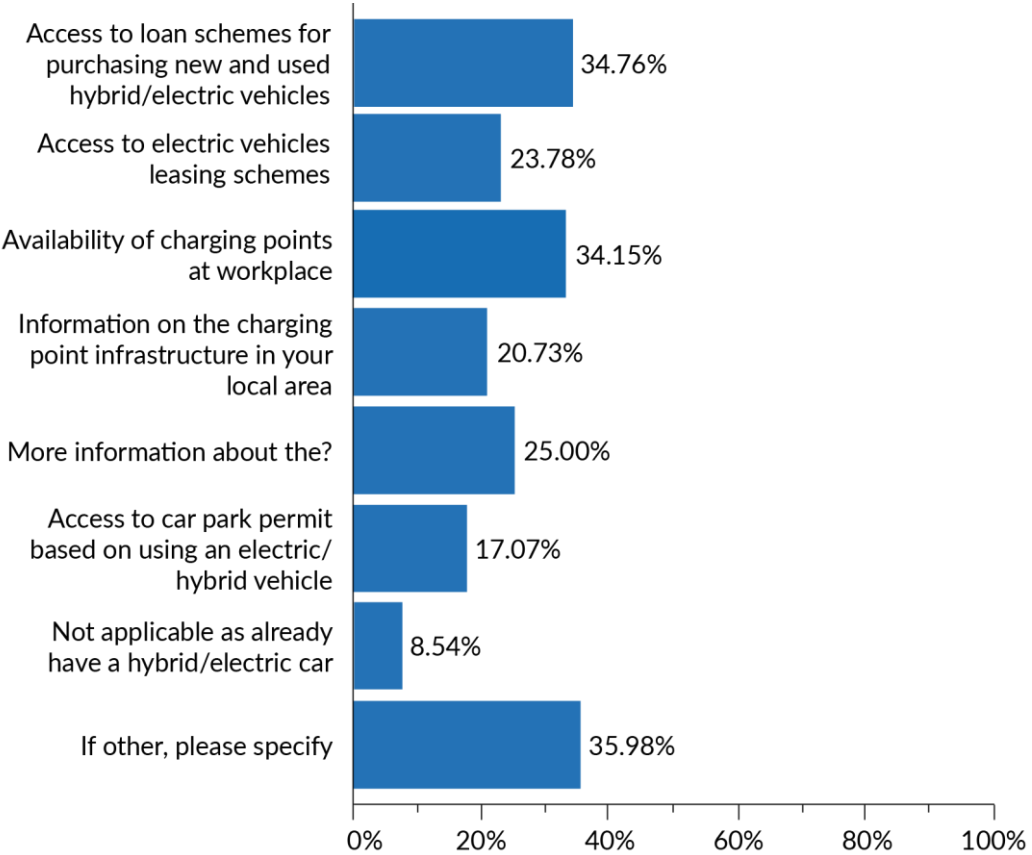
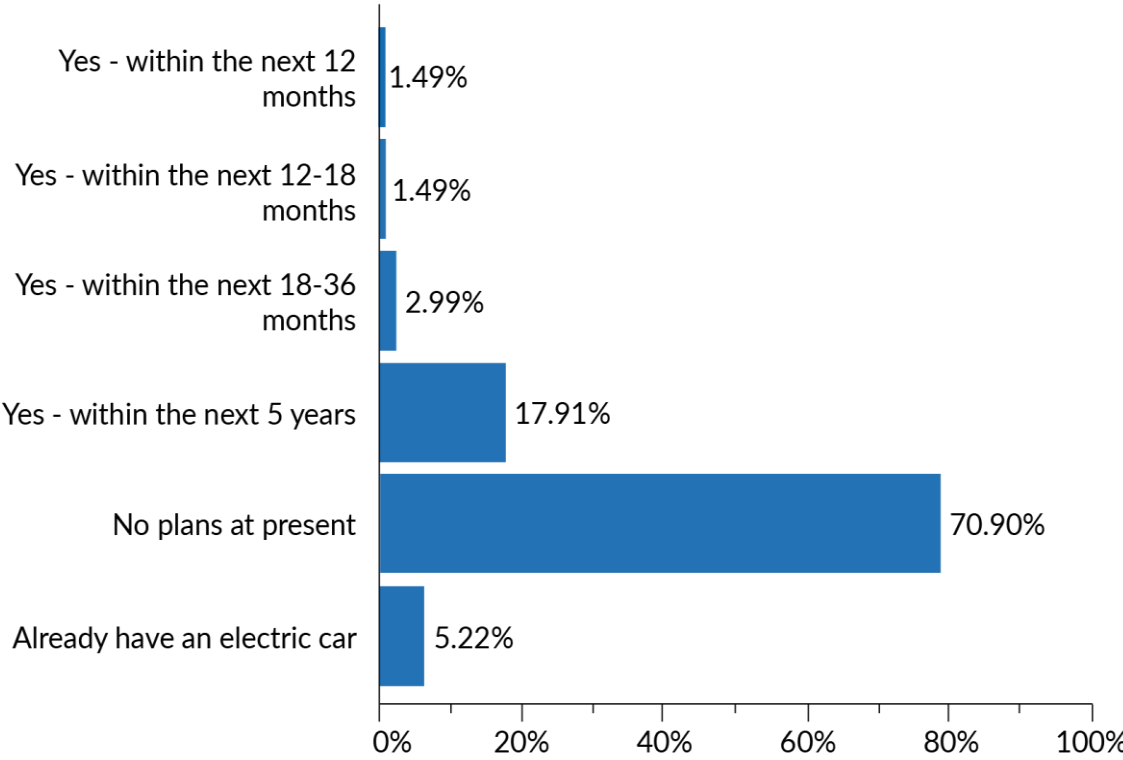
What time do you normally leave campus?



What are the main reasons for you choosing your main mode of travel?



Are you considering purchasing an electric vehicle and what would be the key factors in the decision making?



4. Objectives and Monitoring

The Travel Plan aims to develop ways in which the College can reduce dependency on driving and develop more sustainable methods of travel.

More specifically

- To facilitate sustainable travel choices.
- To increase car sharing – and consequently reduce single occupancy car use.
- Encourage alternative means of transport for staff and students living within two miles of College.
- An increase in cycling.
- Reduce reliance on the car as a means of transport..

We have identified targets for increasing sustainable travel modes

- Decrease single occupancy car use.
- Increase sustainable travel.
- Reduce emissions from business travel.
- Manage fleet and operational vehicles.
- Manage travel by visitors and deliveries.

Travel Plan Measures implemented

- Cycle to work scheme.
- Cycle shelters.
- Shower facilities at every campus.

Travel Plan Measures to be implemented

- Access to lockers.
- Promote ideas to reduce car use on 'busy' days on campus at Sighthill. E.g. Tuesday/Wednesday/Thursday.

This plan will be continually updated through the College' Sustainability Steering Group.

Specific target to address from the Travel Survey:

- Setting of target %s for main questions from Travel Survey results above.

Monitoring and Review

The progress of the Travel Plan will be measured by:

- Annual travel survey of staff and students to measure any changes in the patterns of travel and to assess whether aims, objectives and targets set have been achieved.
- Continual updates through the Sustainability Steering Group.
- Continual review of carparking usage across each campus.
- Review of parking permit usage.

It should be noted that there may be external influences beyond the control of the College which may impact travel choices, such as alterations to public transport provision, weather conditions, fuel prices and local transport policies. It may be necessary in those instances to change the targets of the Travel Plan.

5. Site plan



End of document